

Write ans as per Need Booklet pattern  
Shradha Parashar

BIS 3 (Part B) (ECo + others)

30/01/2021.

प्रश्नोत्तर पुस्तिका वारकोड/QR CODE: Page No. 01

SECTION - A

अंक: 30

उत्तर, प्रश्न में 15 अतिलघुमयीय उप प्रश्न हैं, प्रत्येक प्रश्न में 20 अंकों का है। प्रश्नों में से 10 प्रत्येक प्रश्न 10 अंकों का है।

This question contains 15 very short type questions. 10 of each question in maximum 15 to 20 words. All questions are compulsory. Each question carries 03 (Three) Marks.

Commercial Crops

They are crops grown for commercial purpose like food processing or non food industry. Eg Tobacco, Indigo, etc.

Treasury Bill.

It is a short term debt instrument used in money market. It is a security of government. Maturity < 1 year  
\* Issued by RBI on behalf of govt.

Frictional unemployment

Unemployment occurred due to change in job by a person. It is a time gap between person left a job & got new job.  
\* Time required to get a new job.

Give it up campaign

To mobilise public support & behavioural change

Sondachamush:

It is a scheme under ICDS (Integrated Child Development Scheme) to provide universal immunisation \* to boost preventive care \* vaccine for diphtheria, polio, Hepatitis B, etc.

SECTION - A

खंड-'A'

प्रश्न 1 इस प्रश्न में 15 अतिव्यापकरीय प्रश्न हैं प्रत्येक प्रश्न का उत्तर अधिकतम 15 से अधिक शब्दों में देना है।  
 अनिवार्य है। प्रत्येक प्रश्न में 3 अंकों का है।  
 Question 1 This question contains 15 very short questions. Answer each question in maximum 15 words. All questions are compulsory. Each question carries 3 marks.

प्रश्न : 18) AMRUT

उत्तर \* Atal Mission for Rejuvenation & Urban Transformation \* launched in 2015  
 \* aim - improve, water & sanitation, housing, sustainable Rehabilitation, & clean Energy

प्रश्न : 19) Crop density

उत्तर It is no. of crop grown/Variety of crop grown, in per hectare area of land per year \* good for soil fertility \* to provide nutritious mix & income to farmer.

प्रश्न : 20) Ranching farming

उत्तर It is a farming practice in which after crop sowing & harvesting for a specific time - land is left fallow.

प्रश्न : 21) SIDBI

उत्तर \* Small Industries Development Bank of India \* provide Mudra loan  
 \* Regulated by government It is an all India financial institution \* Regulated by RBI

प्रश्न : 22) Fiscal deficit

उत्तर It is amount calculated by subtracting borrowing from total deficit of government Budget.  

$$\text{Fiscal deficit} = \text{Total Expenditure} - \text{Non debt Capital Receipt} - \text{Revenue Receipt}$$

SECTION - A

वर्ग-30

प्रश्न 11 से 14 तक के उत्तर देने के लिए प्रश्न पत्र में दिए गए निर्देशों का ध्यान रखें।

This question contains 4 questions of 3 marks each. Answer each question in maximum 100 words. All questions are compulsory. Each question carries 3 marks.

11. Human Capital.

It is a way of considering human resource country in its monetary value.

\* Assigning Demography of a country to productive activity then it become capital for a nation's economy.

12. Village Industry.

\* Small scale and cottage based industry at village level & produce handmade, or intermediary goods & large no. of women stills engaged & Agarbatti making.

13. Food security

Availability, Accessibility & Affordability of food to all the people, all the time is termed as food security.

\* National food security Act 2013 - Envisaged about.

14. MSP

It is price at which government (PCI on govt behalf) procure food grains from farmers & announced by cabinet committee on Economic Affairs.

15. Anti dumping duty

It is an duty tax imposed on import of some certain goods in country, to counter subsidized/cheap goods of other country to harm Indian market.

CAPE  
Aile

प्रश्न 2. निम्नलिखित में से किन्हीं 10 प्रश्नों के उत्तर अधिकतम 100 शब्दों में लिखिए। प्रत्येक प्रश्न 6 (छः) अंकों का है।  
 Write the answers of any ten of the following questions in maximum 100 words. Each question carries 6 (Six) marks

• Aadhar is an Unique Identification

Card

• Issued by Unique Identification Authority of India

• It include Biometric detail of a person - like fingerprint, Eye etc

• played significant role in

↳ JAM Trinity → Jan Dhan Adhar Mobile based payment for DBT transfer

W → AEPs → Adhar Enabled payment system of NPLI → financial inclusion of remote areas

↳ Over inclusion & under inclusion error → can be countered

↳ can be used at Ration shop for PDS.

## SECTION - A

खंड - 31

पश्चोतः 2

निम्नलिखित 10 प्रश्नों के उत्तर अधिकतम 100 शब्दों में लिखिए। प्रश्नों में से 6 (छ) उत्तर का हो।  
 Write the answer of the following questions in maximum 100 words. Pick up any 6 (Six) marks.

पश्चोतः 22

UPI

- Unified Payment Interface It is a systematic solution based software → to produce customized apps & services → for social & Economic & services → (Finance & Banking).
- Designed by NPCI
- BHIM - UPI → ~~is~~ payment app. 4  
 designed on UPI platform
- NETC → National Electronic toll Collection through fastag made on UPI platform
- ~~It~~ Enable digitally transfer of amount from one's bank account immediately.

## HDI

- Human development Index focuses on measuring Economic development not just growth. ✓
  - Qualitative Index → measure the increase in Quality of life of people with increase in National Income
  - 3 indicators → ① Health ② Education ③ Standard of living. ✓
  - India ranked 131 in 2020.
- (-ve of HDI) → But it does not take into account → ① Law Economy of nations ② Impact on Environment of development ③ Inequality in Income distribution ④ Gender inequality.
- However it is an improvement over GPP comparison. - developed by Mahbub ul Haq & Amartya Sen

Only Quality  
Analysis

Write the answers of any ten of the following questions in your own words. Each question carries 6 marks.

### Bank development.

\* Pre Independence Era ⇒ Bank of Mysore, Bank of Patiala, Bank of Bombay → But not much help in financial inclusion

\* Post Independence Era ⇒ RBI formed by RBS Act 1935

\* Post Independence Era ⇒ Consolidation, merge & nationalisation of Banks took place. → State Bank of India - 1955 → Nationalisation of 16 Public sector Banks in 1969

→ Nationalisation of more public sector Banks in 1980's

→ Private licensing of Bank allowed

→ Post 1991 LPA Reform → foreign Banks allowed like HSBC, Citibank

→ 41% FDI in Banking sector allowed.

*Private Banks  
New Development*

(2)

Write the answers of any ten of the following questions in minimum 100 words. Each question carries 6 (Six) marks.

## Bombay Stock Exchange

→ Asia's oldest stock Exchange

→ India's first stock Exchange

→ formed in 1870's

→ currently, 30 top rated companies taken for calculating index, named SENSEX

*discuss Sensex index and its origin*

→ provide a platform for buying & selling of shares & Equity

→ It connect companies to investors & help mobilize capital.

→ It is located at Dalal street Mumbai.

→ Reflect the market trend & Economic growth prospects of a nation.

12



SECTION - A

खंड-31

प्रश्न-2. निम्नलिखित में से कितनी ही प्रश्नों के उत्तर अधिकतम 100 शब्दों में लिखिए। प्रश्नों में 10 अंक हैं।  
 Answer-2. Write answers to any ten of the following questions in maximum 100 words. Each question carries 10 marks.

6x10=60

पृ. 11/06



Wholesale price Index

\* WPI index to ~~calculate~~ <sup>reflect</sup> & measure inflation level in an economy ✓

\* It is calculated on wholesale price of goods. ✓

\* It does not take into account services. ✓

\* It is released by office of Economic Advisor ✓

\* But it doesn't reflect the true burden of inflation in market on customers ✓

\* Released on Quarterly Basis ✓

Also its important categories, commonly weights.

9/2

Write the answers of any ten of the following questions in brief words. Each question carries 6 marks.

# Singrauli Region ✓

→ It lies in the NE part of MP

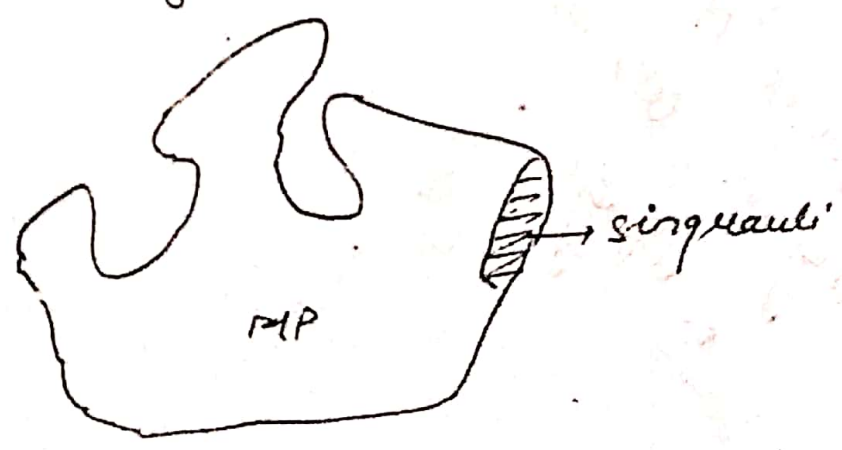
## → Economic Significance of It

- (i) It has world's thickest coal deposit layer at Bedhan Singrauli
- (ii) NTPC thermal power plant in Singrauli providing energy to state
- (iii) Hydroelectric power generation through Rihand dam.

W

## → Geographical

- (i) Rice & mill et growing regions found here
- (ii) Red-yellow mix soil found here
- (iii) hold no. of Sal-teak-Bamboo forest
- (iv) No. of tribal belts lie in the region



प्रश्नोत्तर में से किसी 10 प्रश्नों के उत्तर अधिकतम 100 शब्दों में लिखें। प्रत्येक प्रश्न 6 (छ) अंकों का है।  
We are to answer any ten of the following questions in maximum 100 words. Each question carries 6 (Six) marks.

### characteristic of MP Economy.

\* \* Madhya Pradesh → Consecutive winner of Krishi Karman Award + referred to as soya state → Mostly agricultural state

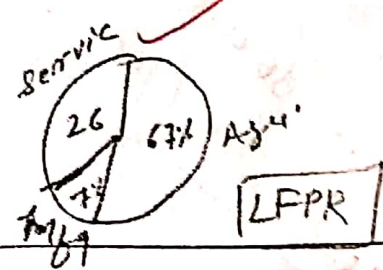
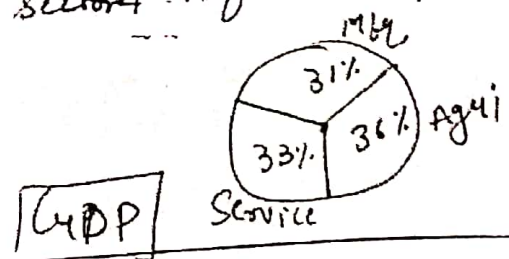
\* Optimum Industrial development → like Pithampur (any part of MP); Dewas Industrial area

\* Service sector participation is also 26% Labour force engaged in service sector → ~~33%~~ 33% contribution to state's GDP

\* Also things like Maheshwari saree, soyabean oil, 'Kadakhath Chicken' etc contribute to Export of MP.

\* Infrastructure → 15th position in rail network  
↳ > 25000 km of road construction

\* But still a More efforts are required to increase its share in industrial sector & infra improvement



Q.2. Answer the following questions in maximum 100 words each. (10 marks)

# Q SEZ

\* Special Economic Zone → area which has been promoted by government to welcome investment & companies from foreign.

\* help to bring FDI in the country ✓

\* Certain benefits like → Tax benefits, Infra development, relaxed labour norms, Ease of doing practices are provided here ✓

\* B4B4 Kalyani Committee → recommended to ease norms in SEZ area

\* Eg → GIFT City Gujarat  
Pithampur MP. ✓

\* Help in countries growth, increase in capital formation, Bring Technological innovation to nations:

discuss social  
Recent development

Question 2. Write the answer of any two of the following questions in maximum 100 words.

### Q.2. Define Merchant Banking

- \* It is Banking facility at door step, through merchants.
- \* Institutional & infrastructural set up not required.
- \* Eg. Banking Correspondents at Rural area
- \* Play significant role in financial inclusion → increasing the reach to remote areas.
- \* Improve Regional disparity & Income disparity of nation.
- \* Payment Bank is an example of it
- \* Eased licensing norms & capital required
- \* Any super market chains, wholesaler can take license by fulfilling criteria
- \* Eg Paytm, Airtel payment bank

## Q RBI

- RBI was formed by RBI act of 1935
- It is the Central Bank of India.
- It plays various Regulatory, supervisory, & promotion roles.
- RBI issues monetary policy to manage inflation in Economy and adjust Bank lending Rates.

Function of RBI include

- ① Regulatory Power over Bank
  - ↳ CRR, SLR Requirement
  - ↳ Bank Branch norms
  - ↳ PSL norms

② Regulate NBFCs like CUA fund  
of NBFC companies

↳ same people from fraud

③ Lender of Last Resort

↳ short term loan by bank at  
Repo Rate

↳ loan by govt to manage  
fiscal deficit

④ Control Inflation in Economy through  
monetary policy.

⑤ Act as public debt manager

⑥ Issue, Treasury Bill, Govt Sec, on  
behalf of government

⑦ Circulation of currency in Economy  
↳ printing of currency → through  
matching Asset & Liability

प्रश्न 1. (3.1) Continued (जारी)

Question 1. (3.1) Continued (जारी)

(8) Promotional Roles →

↳ Release financial stability  
Report ✓

↳ Gauge economic growth of  
company ✓

(9) provide a dividend to govt  
for fiscal stimulus

~~Describe each function  
in detail~~



## National Development Council

\* It setup in 1950's, during Nehruvian Era

\* It plans, coordinates & monitor various developmental plans prepared by planning commission

\* It is based on socialist economic model

\* Based on Top-down approach where planning is done at central level i.e. top level of hierarchy.

\* It approves & implement the plans prepared by planning commission

\* It included members of state, from state legislature, experts to gauge on technical front.

\* It is an Example of cooperative federalism

\* Help in Inter-agency coordination  
+ Technical advisory from Experts.

\* Various goals taken into consideration include →

- Poverty Removal
- Inclusive growth
- Unemployment Removal
- Capital goods formation
- Self reliance
- Technological innovation

Define core objects  
of NRE with 2000  
Percent unemployment

Q 3-3

### → Skill development plan.

\* Skill development plan is a measure for improving the skills of human resource of country through training & education.

\* Skill development plan aimed at providing and developing capacity of manpower to meet skilled labour force demand of industry

\* To make people self reliant through vocational training & certification → to boost self employment capacity

\* steps taken in this direction include → Prakashat Vikalp Yojana, Jan Shiksha Samithi, etc.

Handwritten text from the reverse side of the page, including the word 'SECTION A' and some illegible notes.

\* Take steps to increase the  
labour force participation  
Rate of women.

\* To provide National Skill  
Certification framework for  
improved level of skilling & Quality

\* STAR program is aimed at  
giving a boost skill development  
through Teaching and Apprenticeship  
at institutes.

\* Make workforce skilled through  
industry led initiatives, guided  
by market demand

\* Program will help to increase  
skilled labour participation  
rate in workforce, which is  
currently accounts only 8%  
of total.

\* ~~How~~ help in achieving India's  
aim of becoming skill capital  
of world

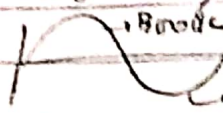
India being a demographically  
young country with more than  
60% youth population → Skill  
initiative can help India  
become \$5 trillion economy.

①

प्रश्न 11 में उत्तर लिखिए। प्रश्न 11 में 20 अंकों में उत्तर देना है। प्रश्न 12 में उत्तर लिखिए। प्रश्न 12 में 20 अंकों में उत्तर देना है। प्रश्न 13 में उत्तर लिखिए। प्रश्न 13 में 20 अंकों में उत्तर देना है। प्रश्न 14 में उत्तर लिखिए। प्रश्न 14 में 20 अंकों में उत्तर देना है। प्रश्न 15 में उत्तर लिखिए। प्रश्न 15 में 20 अंकों में उत्तर देना है। प्रश्न 16 में उत्तर लिखिए। प्रश्न 16 में 20 अंकों में उत्तर देना है। प्रश्न 17 में उत्तर लिखिए। प्रश्न 17 में 20 अंकों में उत्तर देना है। प्रश्न 18 में उत्तर लिखिए। प्रश्न 18 में 20 अंकों में उत्तर देना है। प्रश्न 19 में उत्तर लिखिए। प्रश्न 19 में 20 अंकों में उत्तर देना है। प्रश्न 20 में उत्तर लिखिए। प्रश्न 20 में 20 अंकों में उत्तर देना है।

### Cyclical unemployment

Unemployment in Economy due to Economic growth cycle → During Best period of Economy (Recession)



Best → cyclical unemp. ✓

TRY SEM

It is 1970's initiative to Emp improve Employment prospectus of country. ✓

### Cash credit

It is lending activity undertaken in Cash form or currency. ✓

It is widely prevalent in informal lending. May lead to Money lender's debt trap.

Cash Reserve Ratio - is a statutory Requirement to maintain Reserve by Bank - mandated by RBI. Under RBI act 1935. Act as Buffer during Bank Run. ✓

Multidimensional poverty Index. It is measure of poverty not just in monetary terms but include access to basic resources & services like health, nutrition, Education. It is released by UNDP. ✓

SECTION - II

Question 1 This question is to be attempted by all candidates. Answer each question in the space provided. Each question carries 10 marks.

Tendulkar Committee

- Formed in 2007 to provide measure to calculate poverty in India.
  - It suggested to calculate poverty on basis of monetary consumption value.
- Credit Money.

① It is the amount of money gain through debt activities by Govt Bank.

Gilt Fund

- It is fund consisting of government treasury of a country. Central Bank of a country issue gilt edged securities of this fund on govt behalf. It has high valued bonds.

Green finance

↳ Financing activity done in environmentally sustainable & sound practices called green finance.

- Eg. fund for afforestation, solar project.

Zero net sid.

SECTION - II

खंड-ब

इस प्रश्न में 15 अतिव्यापक प्रश्न हैं। प्रत्येक प्रश्न का उत्तर अधिकतम 15 व 20 शब्दों में देना है। प्रश्न उत्तर अतिव्यापक है। प्रत्येक प्रश्न का उत्तर 20 शब्दों में देना है।

This part contains 15 over-appealing questions. Answer each question in not more than 15 or 20 words. The questions are over-appealing. Each question carries 2 marks.

सुश्रुतिमान कार्य अकारण

9

9

GNAR

General Anti-avoidance Regulation - to stimulate fair marketing practices company can approach prior to get clarification on tax & pricing.

discuss and explain

GST

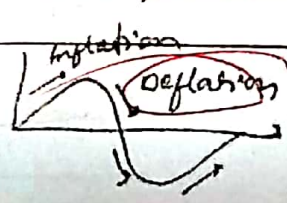
Goods & services Tax - by 101st constitution amendment Act 2017. Concept - one nation one tax. Indirect destination based tax on goods & services marketed in a country.

Deflation.

The slow rate of inflation / declining trend of inflation in an economy is termed as deflation.

If declining trend continue & it started then called deflation.

unemployment %



9



## QSF B

\* Small finance Bank → Established for ~~small~~ small financing / credit needs of people

\* Eligibility → any person with > 200 crore Capital + 10 yrs Experience in banking can apply for Payment Bank

\* Based on Recommendation of Usha Thorat Committee

\* Under Regulation of RBI

\* Limit on Debit & Lending activities of Bank

\* Help in financial inclusion

\* addressing regional disparity & Income distribution in country

## SECTION - B

खंड 'ब'

प्रश्न: 2. निम्नलिखित न से किसी 10 प्रश्नों के उत्तर अधिकतम 100 शब्दों में लिखिए।  
 Question 2 Write the answer of any ten of the following questions in maximum 100 words.

प्रश्न: (2.3) Gender Budget-

उत्तर:

\* Expenditure & Receipts on steps

& programmes towards women

Empowerment and Reducing

Gender Gap are counted in

Gender Budget

→ Any govt schemes with > 33% of  
its for women issue are  
counted in gender Budget

→ It present government efforts  
towards Gender Equality Enshrined  
in article 14, Art 15, Art 16 of  
Constitution

→ It helps assessing the government  
policy direction, further measures  
required & outcome of a program

SECTION B

Write the answers of any ten of the following questions in brief (10) and. Each question carries 6 marks.

Q. MGNREGA & Rural Poverty

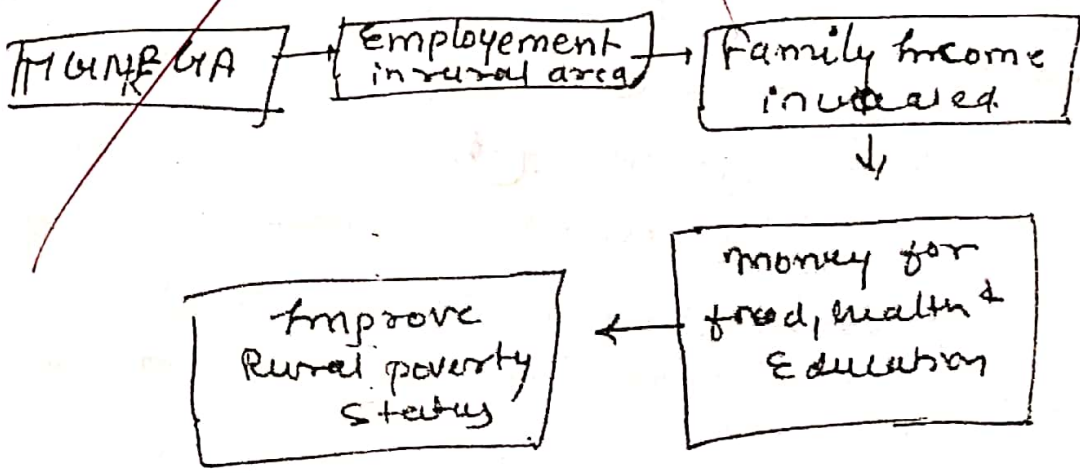
→ Mahatma Gandhi National Rural Employment guarantee act came in 2005

→ aim → provide unskilled guaranteed 100 days labour in rural areas

→ people are entitle for unemployment allowance if work not provided for more than 15 days of application

Office Expenditure

→ Rural poverty → according to report more than >65% of poor people live in Rural area.



Answer the following questions in maximum 100 words. (10 marks)

## Q. Economic development

→ Economic development is the measure of Economic growth (quantitative) + level of increase in Quality of Life of people, + infrastructure creation + Income distribution.

→ It is a Qualitative term.

→ Purchasing Power Parity is an apt measurement parameter of Eco development.

→ Ind holds 3rd position world wide in terms of Purchasing Power parity.

→ It signify income distribution among people and per person rise in income level of people.

(2)

प्रश्न 2. निम्नलिखित में से किसी 10 प्रश्नों में इन अधिकतम 100 शब्दों में लिखिए। प्रश्नों पर प्रत्येक 10 अंकों का है।  
 Question 2. Write the answer not exceeding 100 words for the following questions in maximum 100 words. Each question carries 10 marks.

प्रश्न (20)

## Q. air traffic - MP.

→ 1<sup>st</sup> air traffic service in MP started in 1950's from Indore to Gwalior

→ MP has 5 international airports in a state — Raipur Bhopal

→ Shriya Bai Indore

→ Khajuraho

→ Gwalior

→ Jabalpur

3

→ MP commands huge air traffic & cargo traffic

→ Indore airport connect to Pithampur dry port of MP

→ UDAN scheme of govt is further boosting regional connectivity & making air transport affordable for common people

→ air transport contribute large share of earn money in state's Economy.

### Q. Road dev - MP.

→ MP hold  $> 23000 \text{ km}^2$  Road length in the state

→ NH 7 is the longest & NH 3 busiest National highway of state - connecting Agra to Mumbai.

→ North south Corridor is proposed to pass through state → give impetus to state Economy.

→ Being a landlocked state → Road hold large density of freight traffic

→ Roadways provide door to door connectivity in the state

→ Roadways help in connecting mines to market (Diamond to Jabalpur from Panna)

→ Contribute to Economic development through improving social status → providing village connectivity for health & Education

→ PM Gram Sadak Yojana proved to be a tremendous success in state

(W)

Write the answers of any ten of the following questions in not more than 100 words. Each question carries 6 marks.

## Q. Quality of Employment

- Employment is key indicator of socio economic development.
- According to Report >40% of graduate Indian youth lack employability.
- Quality of Employment lead to Voluntary Unemployment
- Case → eg PhD holder apply for Peon Post
- Quality Employment → Matching Job with respect to Skill set & qualification of person
- Lead to faster growth of Country
- Graduates facing shortage of job in skilled sector → lead to distress.
- Due to Lack of job in skilled sector lead → overburden of agriculture →
- Rise of antisocial activities. eg. B.C. graduate joined ISIS.

(M)

## Q Competition Commission of India

✓  
Competition Commission of India was set up to promote fair & transparent ~~market~~ trade practices in market.

- ✓
- function → prevent monopoly of market
- check cartelisation among vendors
  - protect customer from fraud
  - check adulteration & fair weights & measure
  - check collusion between industry & supermarket chain to sell goods at cheap rates.  
Eg. Amazon can't have its own production
  - check excessive discount & sale cut by ~~seller~~ for profit

(10)



संश्लेषण  
प्रश्न-2 निम्नलिखित में से किसी 10 प्रश्नों के उत्तर अधिकतम 100 शब्दों में लिखिए। प्रत्येक प्रश्न 6 (छः) अंकों का है।  
Ques 2 Write the answer of any 10 of the following questions in maximum 100 words. Each question carries 6 (Six) marks.

प्रश्न (2.11)

### Q. PSB

- Public sector Banks are government owned Entity, where gout own > 51% share
- They are listed under 1st schedule of RBI act
- They work towards financial inclusion, Expanding credit coverage, door step banking, credit availability, etc
- They are mandated to setup 25% Branch in rural areas
- Example - SBI, ICICI, HDRC.
- Recently; PSB are facing big NPA problem ~~was~~ <sup>some</sup> put under prompt corrective action of RBI.
- all managing & direction work of PSB are under taken by Board of directors
- Board of directors of PSB selected by Bank Board Bureau.

(W)

Q. 1000

Commitment  
Process

→ Loan credit limit is used to  
provide to avail cash for  
input, mechanisation & irrigation  
for infrastructural cost related  
to agricultural or personal cause.

→ It help in credit availability  
to farmers are easily & at  
nominal interest rate

→ It solve farmer's from informal  
money lender's debt trap & curb  
suicide

→ Help in improve in agricultural  
productivity

→ It can be issue by an PSB.

प्रश्न 3. इस प्रश्न में दो (2) उप-प्रश्न हैं। प्रत्येक प्रश्न का उत्तर 100 शब्दों में देना है। सभी प्रश्न अनिवार्य हैं।  
 प्रश्न 15 (पन्द्रह) अंकों का है।  
 Questions 3. There are (2) sub-questions in this question. Each has to be answered in 100 words. All questions are mandatory.  
 Question 15 (fifteen) marks. The answer to the entire question (both sub-questions) is to be made explicitly before  
 any other question. 15 (fifteen) marks.

Q.15.1.1

### Q Current Capital Mkt

ANS :

Current Capital Market is an arena where buying and selling of shares and Bonds takes place which have maturity of more than 1 year.

Role →

It provide mechanism to connect company to investors

→ It help in mobilisation of saving & investment

→ provide Easy way for household to Earn profit apart from Bank interest

2023-24 (JARI)

- lead in increase in capital formation of country
- Help mobilize money for long term projects as it has long in lock in period of money
- Also helps to attract FDI & FPI
- help in improving foreign reserve of country.

Issues

- AS the money is locked for more than 1yr → so less liquidity of bonds & shares
- Risk of company going in loss and hence risk on Return

SECTION - II

संक्षेप

प्रश्न 1. निम्नलिखित में से एक प्रश्न का उत्तर दीजिए। (10 अंक)  
प्रश्न 2. निम्नलिखित में से एक प्रश्न का उत्तर दीजिए। (10 अंक)

प्रश्न 1. निम्नलिखित में से एक प्रश्न का उत्तर दीजिए। (10 अंक)

→ RSk of Recession in Economy  
in long run → may decrease  
Bond yield

Insolvency & Bankruptcy  
of company.

SEBI regulate Capital market  
& provide regulation &  
mechanism to overcome  
challenges. etc

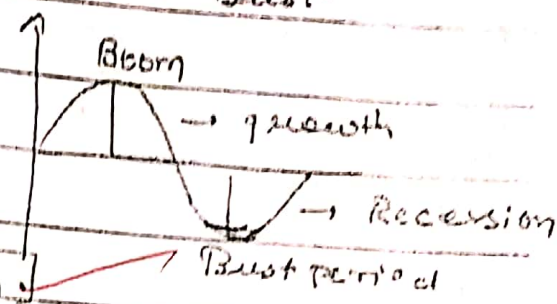
~~Apply same  
with the Capital  
Market.~~

SECTION-B

QUESTION 2

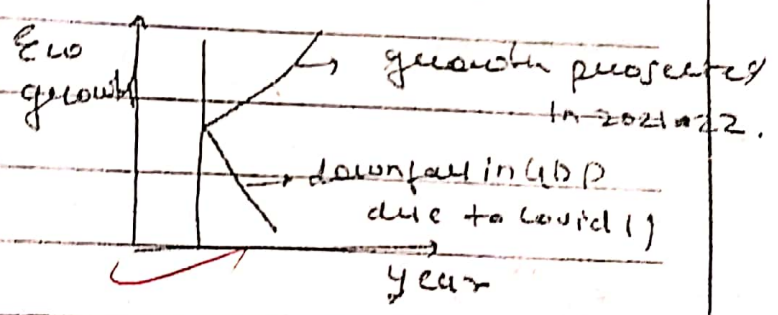
Q. Current trends

Economy of a country is comprised of cycle of Boom & Bust



Economic Growth

According to Economic survey 2020-21 due to Covid 19 -> Economic growth will have a K-shaped Recovery



Unemployment -> Due to pandemic

there is >40% jobless occurred in MSME sector according to reports

But government initiatives like Atmanirbhar Bharat -> Quality Path: for Employment Opportunity.

There are 10 sub-questions in this part. The marks for each question are given in the margin. All questions are compulsory. The answers should be written in the answer book.

Q.2) Continued (जारी)

Poverty for Pradhan mantri gauib  
kalyan yojana, Pradhan mantri  
shram yagi mandhan yojana  
were steps taken by govt to counter  
pandemic induced poverty.

Infrastructure → India has largest  
rail network & huge density  
of road network - 4<sup>th</sup> in the  
world.

With inauguration of Roa  
Atal Road tunnel & Bogibel  
Bridge → country is expanding  
its reach.

Forex for There is surge in  
forex reserve of RBI due  
to NRI transfers.

+ FDI incoming from MNC's  
opening their subsidiary in  
India Eg. Apple

Thus, with some Isberg like shock.  
Country is on path of improvement.  
Aadhaar and Bharat package  
is further reinforcing the growth.

(6)

→ Discuss statistical data provided by  
Ministry, with price  
Sunday  
Friday



## Q Financial Inclusion

Financial Inclusion is develop  
Economic & social development  
of a country including all the  
the sections of society.

It Embodies for Equitable &  
Encompassing distribution of profit  
& growth Encompassing all the  
people of country.

The idea is Enshrined in  
Gandhiji's Ideal "Savyodaya through  
Antyodaya"

### # Significance

- ① Equitable distribution of  
Resources help improve  
India's rank in Income  
inequality Index

- ① Help improve human development of a country.
- ② Make Basic facilities (Health, Education) Accessible & Affordable to people
- ③ Help creating Human Capital & tapping demographic dividends of country with >60% workforce
- ④ Help mobilizing savings of household towards capital formation.
- ⑤ Achieve mantra of "Less Cash Economy" currencies
- ⑥ Counter Rural distress & farmer suicide through Easy Credit availability. ~~At through~~  
KCC
- ⑦ Help in indigitizing digital

UNIT 13, 14 Combined (100)

Economy

- (9) Upliftment of weaker sections like tribals, SC, ST women.
- (10) Generate income source to people through interest rate paid.
- (11) Help beneficiary and government schemes. — like National Social Assistance programmes, PAAAF-LPG-RDBT.
- (12) Reduce ~~corruption~~ of siphoning of funds of assistance schemes. (12)

Thus ~~income~~ financial inclusion is of paramount importance in achieving SDG 2 & SDG 1 & SDG 3 (Hunger, Poverty, Health).