

नमूनार्थ प्रश्नोत्तर पुस्तिका
Sample Question Answer Booklet

PART.....B.....

PAPER.....2nd.....

DATE.....20/11/2022.....

Paper Code
GS-IV

306666



Paper Code
GS-IV

रोल नंबर अंतर्राष्ट्रीय अंको में लिखें -
(1, 2, 3, 4, 5, 6, 7, 8, 0)

| | | | | | |
|----------------------|----------------------|----------------------|----------------------|----------------------|----------------------|
| <input type="text"/> | <input type="text"/> | <input type="text"/> | <input type="text"/> | <input type="text"/> | <input type="text"/> |
|----------------------|----------------------|----------------------|----------------------|----------------------|----------------------|

रोल नंबर शब्दों में लिखें -

नाम.....मीनिका राठी.....

अभ्यर्थी द्वारा सावधानीपूर्वक भरा जावें।

| Roll No. | | | | | |
|----------------------|----------------------|----------------------|----------------------|----------------------|----------------------|
| <input type="text"/> | <input type="text"/> | <input type="text"/> | <input type="text"/> | <input type="text"/> | <input type="text"/> |
| 0 | 0 | 0 | 0 | 0 | 0 |
| 1 | 1 | 1 | 1 | 1 | 1 |
| 2 | 2 | 2 | 2 | 2 | 2 |
| 3 | 3 | 3 | 3 | 3 | 3 |
| 4 | 4 | 4 | 4 | 4 | 4 |
| 5 | 5 | 5 | 5 | 5 | 5 |
| 6 | 6 | 6 | 6 | 6 | 6 |
| 7 | 7 | 7 | 7 | 7 | 7 |
| 8 | 8 | 8 | 8 | 8 | 8 |
| 9 | 9 | 9 | 9 | 9 | 9 |

अभ्यर्थी के अनुक्रमांक एवं पहचान पत्र को प्रवेश पत्र से
मिलान पश्चात् ही वीक्षक बॉक्स में हस्ताक्षर करें

| |
|----------------------|
| <input type="text"/> |
|----------------------|

वीक्षक द्वारा भरा जावे।

यदि अभ्यर्थी अनुचित साधन का उपयोग करते हुए पाया जाता है तो वीक्षक निम्नांकित
गोले को काले/नीले पेन से भरे एवं तत्काल केन्द्राध्यक्ष को सूचित करें :

| |
|-----------------------|
| <input type="radio"/> |
|-----------------------|

प्रश्न: (1.1)

उत्तर: Literacy ratio no. of people who are having basic numeracy comparison to total population. Madhya Pradesh has 69.3 literacy, while of India is 80%.

प्रश्न: (1.2)

उत्तर: Vocational education is based on employment & Occupation. It has benefit to 65% of youth of demographic dividend to skill them, provide skill labour to enterprise.

प्रश्न: (1.3)

उत्तर: Girls has 28% enrolment ratio in higher, because of Institution in cities, early marriage, lack of facilities, still girls are not allowed to another cities.

प्रश्न: (1.4)

उत्तर: For skill development Madhya Pradesh has initiated Kausalya Samvardhan Scheme, in health M.P. has started Mother Cooperation Committee, AHEIP for livestock training.

प्रश्न: (1.5)

उत्तर: Vital statistics comprised by Civil registration society, in which the whole records of institutional delivery maintained, which help in policy formation & delivery of policy at ground levels to reduce IMR, MMR.

ह। प्रत्येक प्रश्न 02 (दो) अंकों का है।

This question contains 20 very short answer type sub-questions. Answer each question in ideal 10 words/one line. All questions are compulsory. Each question carries 02 (Two) Marks.

20x02=40

Que. 1

प्रश्न: (1.6)

उत्तर: Indian Culture is much diverse culture in the world, features are (i) multiple ethnic, (ii) multilingual (iii) multiclass also.

पू./M = 02

प्राप्तिक

प्रश्न: (1.7)

उत्तर: Social harmony has three elements (1) Common-ness (2) mutual tolerance (3) know your past.

पू./M = 02

प्राप्तिक

प्रश्न: (1.8)

उत्तर: Purusharthas are the basic ethics, guidance to live a life. It is basic foundation that comprise with Dharma, Karma, Moksha, Artha.

पू./M = 02

प्राप्तिक

प्रश्न: (1.9)

उत्तर: Religion & sect have their own conducting rules for life, so there is a conflict between the codes of religion & sects, due to multiple religions in Indian society.

पू./M = 02

प्राप्तिक

प्रश्न: (1.10)

उत्तर: Extension education means 'ex' means out. To provide education last mile, such as distance learning programmes.

पू./M = 02

प्राप्तिक

Que. 1 This question contains 20 very short answer type sub-questions. Answer each question in ideal 10 words/one line. All questions are compulsory. Each question carries 02 (Two) Marks.

प्रश्न: (1.11)

उत्तर: Due to population there is more scarcity, more exploitation of resources, land pressure for ex there is less land under cultivation.

प्रश्न: (1.12)

उत्तर: Bhagnoria & Ujardiya of Bhil tribe during Holi, while Magnath festival by Gond tribe of Madhya Pradesh.

प्रश्न: (1.13)

उत्तर: On 23 September, 2018, Ayushman Bharat-Pradhan Mantri Jan Arogya Yojna was launched to provide health insurance to larger population on diseases.

प्रश्न: (1.14)

उत्तर:

प्रश्न: (1.15)

उत्तर: Population control is important to provide all facilities to all, such as "maintain standard of life" with education, health, employment & the optimize resource utilization, conserve for next generation.

Que. 2

This question contains 08 short answer type sub-questions. Answer each question in ideal 30 words.
All questions are compulsory. Internal choice can be given in the question. The candidate has to explicitly indicate the option chosen. Each question carries 5 (Five) marks.

प्रश्न: (2.1)

उत्तर: Four effective quality of higher following measures
he can take -

- (1) The political bodies holding the post such as Vice Chancellor should be changed with educated person or by other researchers
- (2) fund on time, because branches like biotech has the future scope for India, but instruments are costly.
- (3) Interaction with International colleges for ex - Global Initiative for Academic Science (GIAS)

प्रश्न: (2.2)

उत्तर: Under privileged classes are seen as social stigma they have faced issues like social isolation, lack of implementation of policy to uplift them by government, from the many years they are seen as lower in society, these are mentioned in our religious texts also there some times they faced issues in removing social stratification from society.

पू./M =

प्रासांक

This question contains 08 short answer type sub-questions. Answer each question in ideal 50 words/5 to 6 lines. All questions are compulsory. Internal choice can be given in the question. The candidate has to explicitly indicate the option chosen. Each question carries 5 (Five) marks.

सं: (2.3)

पू./M = 05

प्रासांक

उत्तर: Development projects are challenges to local people. Like tribes of that particular area faces rehabilitation problem. Development project results into loss of habitat, livelihood source. The development projects such as Coal development, Dam formation, Canal formation has results into multiple rehabilitation of tribes of Madhya Pradesh. Unemployment & health issues also arises to them.

पू./M =

प्रासांक

सं: (2.4)

पू./M = 05

प्रासांक

उत्तर: National educational policy, 2020 by Ministry of Human Resource Development has following features
(1) It came with blend education of online & offline (~~off~~), 45% courses will be offline & remaining online (2) the model has changed to 10+2 to 5+3+3 model. (3) students are free to discontinue their courses by getting a certificate of particular year whom he/she had did courses.

Scanned with

www.kautilyaacademy.com

Phone No. 0731-4226615, 4266821 Mob. 98939 29541, 94250 68121

Scanned with CamScanner

This question contains 08 short answer type sub-questions. Answer each question in ideal 50 words/5 to 6 lines. All questions are compulsory. Internal choice can be given in the question. The candidate has to explicitly indicate the option chosen. Each question carries 5 (Five) marks.

पू./M = 05

प्रासांक

श्न: (2.7)

उत्तर: Ashram system is ancient discipline teach by "guru" in "gurukul". These have some stages like (1) Ashrama (2) Grihastha (3) Vanaprastha (4) Sanyasa.
Ashrama - In first 25 year of age will be there.
Grihastha - 25-50 year of age will be with family.
Vanaprastha - 50 onwards 50 Man will go to forest & at last Sanyasa - will search god.

श्न: (2.8)

पू./M = 05

प्रासांक

उत्तर:

उत्तरा २५५ उत्तरा ३५५ ५ उत्तरा उत्तरा/प्रश्न- ५५५ उत्तरा ३ (५५५) उत्तरा ५५५

Que. 2 This question contains 08 short answer type sub-questions. Answer each question in ideal 50 words/5 to 6 lines. All questions are compulsory. Internal choice can be given in the question. The candidate has to explicitly indicate the option chosen. Each question carries 5 (Five) marks.

पू./M=05

पू./M=05
प्रश्निक

प्रश्न: (2.9)

उत्तर: २.९ Ans This festival prevalent in Bilal tribe, celebrated by the whole month after Shukla. This festival have importance culturally choosing of life partners by skinner freedom girls & boys. It's importance in present time is that tribal view can not liberal view in case marriage, while in present modern society there case Inter-caste marriage not allowed, also liberty of part ner not allowed.

प्रश्न: (2.10)

उत्तर: २.१० Such tribes of Andhra are Bong

पू./M=05
प्रश्निक

Que. 3 This question contains 04 long answer type sub-question. Answer each question in ideal 200 words. All questions are compulsory. Internal choice can be given in the question. The candidate has to explicitly indicate the option chosen. Each question carries 20 (Twenty) marks.

प्रश्न: (3.1)

उत्तर: In India 1.18 males are disabled, while 1.5 females are disabled. 69% of the 121 crore population resides in rural population areas this is according to 2011 census.

At the same time India has 65% of its demography in working age group (18-49). To get the maximum results India need to address the potential of whole 65%.

Challenges by disable person :-

- (1) Social isolation - After the birth the disable person faced social isolation, due to it seemed as stigma, at some places there are 'doctrine of karma' also prevalent.
- (2) Hinder - The family & person hinder themselves from various activities of society.
- (3) Education inclusion - The special schools are less, those can include disable persons, if exists then at a distance.
- (4) Employment - There capable person who are doing work, despite disable, but for

Que. 3

This question contains 04 long answer type sub-question. Answer each question in ideal 200 words. All questions are compulsory. Internal choice can be given in the question. The candidate has to explicitly indicate the option chosen. Each question carries 20 (Twenty) marks.

प्रश्न 3: (3.1) Continued (जारी)

along in private sector condition worst to
disable population.

It can be minimized by following measures:

(i) Awareness about schemes such as
Access India Campaign, Fund for disable
purchase.

(ii) Being awareness in people to remove
social stigma. (iii) By providing job in
different sectors as in constitution
under Article 41 it is mentioned that
"state shall endeavour to provide work,
employment in case of disability & unemploy-
ment, under the economy & development
capacity of state.

(iv) Equipments to disable person, e.g. for
blind person, by using technology.

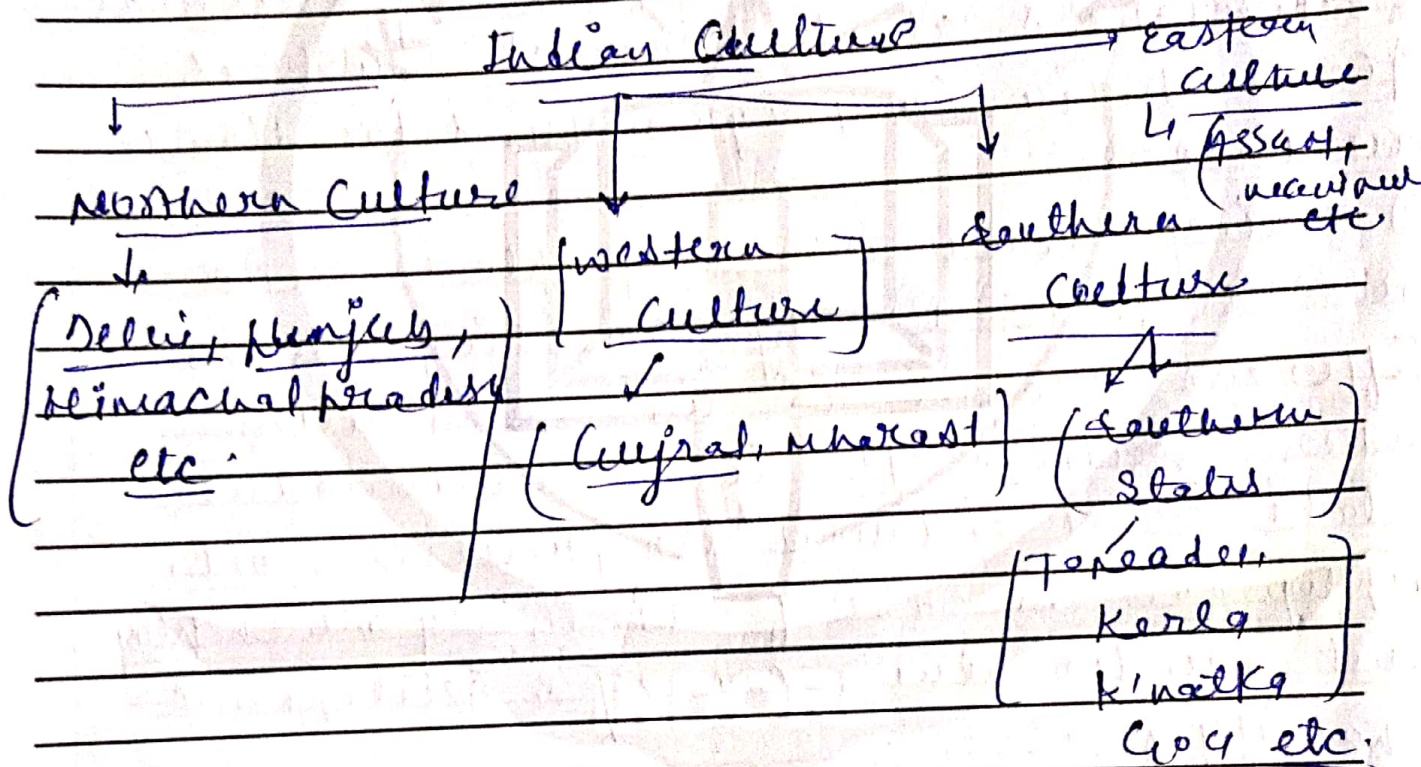
(v) Define well what is disability.

Government of India has initiated several
schemes & Act such as Person with disabili-
ty Act 2016 to inclusion of disable
people in activities. Awareness have big
role in inclusion:

Que. 3 This question contains 04 long answer type sub-question. Answer each question in ideal 200 words. All questions are compulsory. Internal choice can be given in the question. The candidate has to explicitly indicate the option chosen. Each question carries 20 (Twenty) marks.

प्रश्न: (3.2)

उत्तर: Culture of India - is multicultural society having the following cultures -



The all states of India have different cultures with different religions. In northern there are - Hinduism, culture which have their own sects, traditions. Also having muslim, sikhs, jains in minority.

This question contains 04 long answer type sub-question. Answer each question in ideal 200 words. All questions are compulsory. Internal choice can be given in the question. The candidate has to explicitly indicate the option chosen. Each question carries 20 (Twenty) marks.

श्न 3: (3.2) Continued (जारी)

While in Southern culture - They also do exist with Multiculture - like, Kanada, familian, with muslim, Christianity in minority

Eastern - Eastern state mostly tribes they follow their culture of Ainism, toke nism

Feature → Multicultural,
 → Multiclass
 → Multilingual
 → Multicaste

Despite all of these are features is "Unity in Diversity" or "Unity without Uniformity".

Que. 3 This question contains 04 long answer type sub-question. Answer each question in ideal 200 words. All questions are compulsory. Internal choice can be given in the question. The candidate has to explicitly indicate the option chosen. Each question carries 20 (Twenty) marks.

प्रश्न: (3.3)

उत्तर: WHO was founded on 1948, it is a specialized agency of United Nations. Having Head quarter in Geneva, Switzerland. It stands for World Health Organisation.
Functions :-

① Objectives - - To make conciliation between the different government to initiate health programmes to tackle disease.

② Declare a disease of public health concern like recently WHO declared Monkeypox global epidemic. It also spread in Kerala, India.

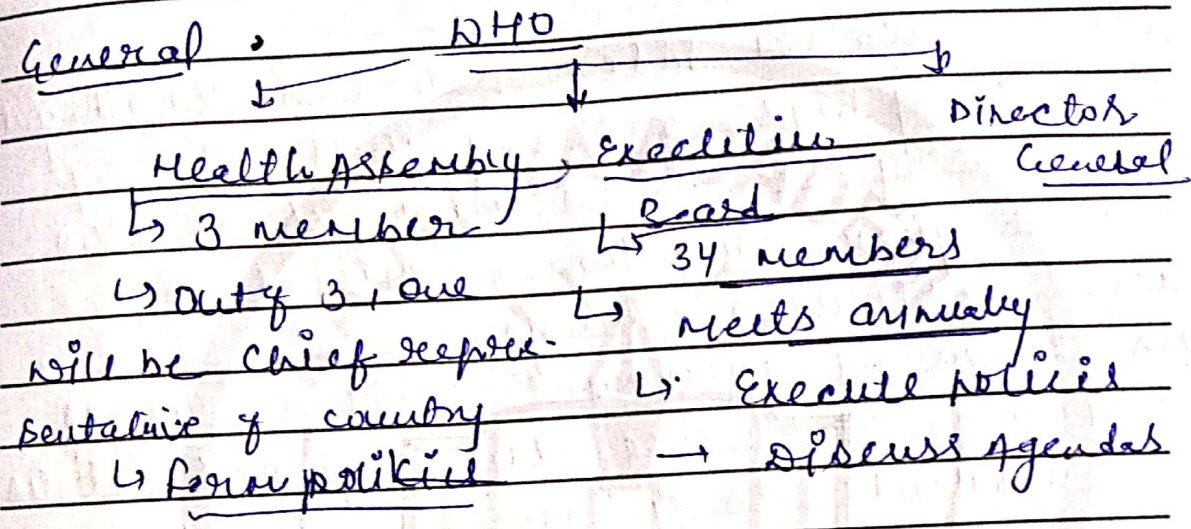
③ Provide funding to developing countries to initiate health programmes with World Bank for eg - Polio eradication programme in 1988 etc.

Structure → It comprises with General assembly, executive board, Director

प्रश्न 3. आनवाय है। प्रश्न में आतारक विकल्प भा हा सकता है। अभ्यथा जिस आतारक विकल्प का उत्तर द रह है उसका स्पष्ट उल्लेख उत्तर के समक्ष अनिवार्यतः करें। प्रत्येक प्रश्न 20 (बीस) अंको का है।

Que. 3 This question contains 04 long answer type sub-question. Answer each question in ideal 200 words. All questions are compulsory. Internal coice can ve given in the question. The candidate has to explicitly indicate the option choosen. Each question carries 20 (Twenty) marks.

प्रश्न 3: (3.3) Continued (जारी)



Functionary → To objective → To implement health policies to achieve Sustainable Goal -3 - Health & welfare to all

Programms → Polio eradication Programme 2012
1988, Chicken pox eradication programme 1988.

India declared polio free with this programme with 2014.

This question contains 04 long answer type sub-question. Answer each question in ideal 200 words. All questions are compulsory. Internal choice can be given in the question. The candidate has to explicitly indicate the option chosen. Each question carries 20 (Twenty) marks.

प्रश्न: (3.4)

उत्तर: Higher education India has low enrollment rates 26% by boys, 25% by girls, 21% by SC's, 15% by ST's. The quality is also low in higher education, limited to certain institutions only. Steps taken by government → DRUSE, CITA, EQUIP etc's are the programmes initiated by government to enhance the quality, increase international interaction in institutions to get fund on time respectively.

(2) Institute ranking on the 'Global, Country level also help students & National Accredited Assist Certification in education also show quality education.

(3) Mode of online courses (MOOC's), SWAYAM, NPTEL also initiated to learn the higher education programs.

Medical education - In India there are 1 doctor on 11000 citizens, 1 nurse on 600 people, which is not sufficient.

Scan

This question contains 04 long answer type sub-questions. Answer each question in about 200-250 words. All questions are compulsory. Internal choice can be given in the question. The candidate has to explicitly indicate the option chosen. Each question carries 20 (Twenty) marks.

Q3: (3.4) Continued (जारी)

दिए गए कठिने प्रश्नों को WHO मापदंडों के अनुसार
Steps by government - Medical Council Act,
Pharmacy Act, Dentist Act to maintain
the stand of medical education.

Vocational education - Vocational education
is Occupation & employment based education.

• Two following initiatives → National Skill
Mission on

under ministry of empowered 15 July 2018
initiation of National Vocational Edu-
cation & Training (NVEIT), establishment
of Industrial Training Institutes across
the country (ITI'S) to provide industrial
training.

Whether it is medical education
& higher education, the education should be
vocational. The learners will be able to
practice it ^{on} ground. Several graduated
people from medical does not practice, several
higher educated people search for jobs,
not want to do work what they had
sought.

Que. 3 This question contains 04 long answer type sub-question. Answer each question in ideal 200 words. All questions are compulsory. Internal choice can be given in the question. The candidate has to explicitly indicate the option chosen. Each question carries 20 (Twenty) marks.

प्रश्न: (3.5)

उत्तर: ^{3.5} Higher education has vast development scope to our nation. Because the research programmes, field practice basically found in higher education.

For example - (A) In Agriculture - The increasing population is increasing pressure on land, resources, but technology have reduce the potential reduce it.

Recently Spain, Indian Council of Agriculture Research came with Aeroponic Technology to grow potato without the help of nutrients in air, without soil. This will reduce disease crop & increase food security.

(B) In pollution - Bioremediation is new technique that helping reduction of pollution from underground water & soil by making in situ, ex situ practice.

Que. 3 This question contains 04 long answer type sub-question. Answer each question in ideal 200 words. All questions are compulsory. Internal choice can be given in the question. The candidate has to explicitly indicate the option chosen. Each question carries 20 (Twenty) marks.

प्रश्न 3: (3) Continued (जारी)

If comes with these technology ultimately pollution reduced as the instruments such as Solar Cooker, Solar plates which utilizing the solar power in well manner.

(C) To keep the disease to limited boundaries - During the COVID-19, there are equipments developed that tested COVID-19 without any physical human touch that limited the spread chain these initiatives being done by institutions such as MIT, Harvard, Hydro bud.

(D) The new technology also results into sustainable development in all round. That will possible if there is quality education in higher education.